

# DAEWOO

## Service Manual

### Refrigerator

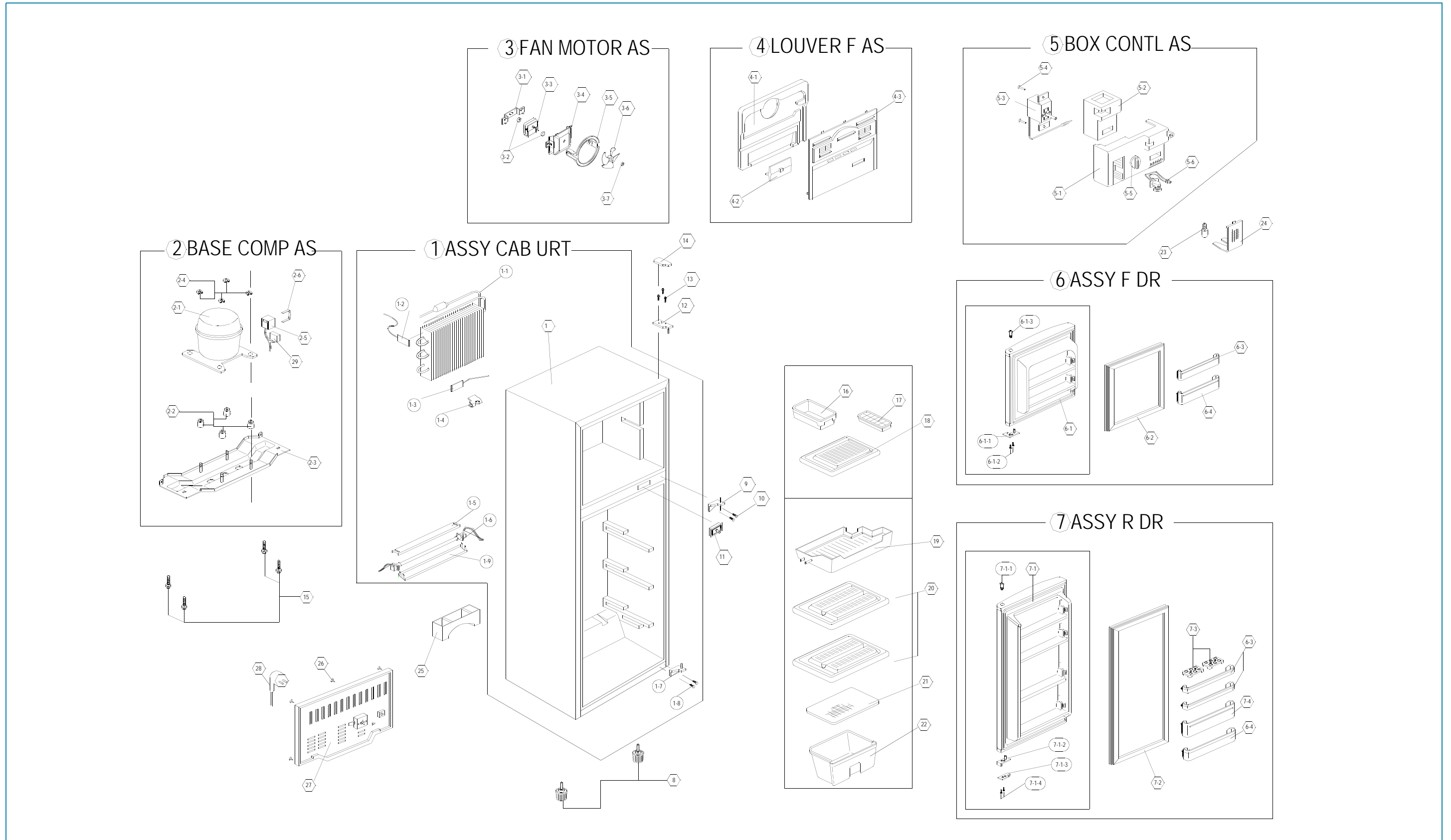
Model: FR-2701, 2702

(FOR USA, CANADA)



DAEWOO ELECTRONICS CO., LTD.

## 1. EXPLODED VIEW



## 2. PARTS LIST

NO	PART CODE	PART NAME	DESCRIPTION	QUANTITY	REMARK
1		ASS'Y CAB URT		1	
1-1	PFFRFRE110	EVAPORATOR SAS		1	
1-2	3018111810	SWITCH BI-METAL AS	ST-3K USA 250 V/5A	1	
1-3	3017200650	FUS TEMP AS	77 $\frac{1}{2}$ OFF	1	
1-4	4017Z90590	FIXTURE TEMP FUSE		1	
1-5	4019R73570	COVER D HEATER *T	AL T0.3	1	
1-6	3012803700	HEATER DEFROST AS	100V/110W	1	
1-7	3012906700	HINGE *U SA	P/D T3.2	1	
1-8	7650602011	BOLT HEX	M6 $\downarrow$ 20	2	
1-9	4019R73580	COVERB D HEATER *U	AL, T0.3	1	
2	3010312610	BASE COMP AS	TAP(EARTH)	1	
2-1	3953118S10	COMPRESSOR	HEL18YH-1 115V/60Hz	1	
2-2	3010100201	ABSORBER COMP	NR-A	4	
2-3	3010312600	BASE COMP SAS		1	
2-4	4019H09030	WASHER SPECIAL	SPG T1.0	4	
2-5	3018113612	SWITCH P-RELAY AS	308NHBY-5C R/C	1	
2-6	3816100100	BAND RELAY		1	
3	3015904060	MOTOR F AS	110V/60Hz	1	
3-1	4017Z32250	COVER FAN MOTOR(B)	ABS	1	
3-2	4017Z08430	ABSORBER MOTOR	EPR-B3	1	
3-3	3015900460	MOTOR F	IS-3210 DWNFQ-2	1	
3-4	4017Z32260	COVER FAN MOTOR(C)	ABS	1	
3-5	4019H32240	COVER FAN MOTOR(A)	ABS	1	
3-6	4019H10310	FAN	ABS	1	
3-7	4019H10060	FAN FIX RING	STS 27	1	
4	3018906000	LOUVER F AS		1	
4-1	3013328000	INSU F LUVR AS	F-PS	1	
4-2	3013401000	KNOB F LUVR	PP	1	
4-3	3018904900	LOUVER F	PP	1	
5	3010517520	BOX CONTL AS		1	
5-1	3010514310	BOX CONTL	HIPS	1	
5-2	3013328100	INSU CONTL BOX AS	F-PS	1	
5-3	3018301300	THERMOSTAT	PFN-175D-01	1	
5-4	7121400811	SCREW TAPPING	T2 PAN 4 $\downarrow$ 8 MFZN	2	
5-5	4017G31041	KNOB THERMOSTAT	ABS	1	
5-6	3017900610	SCOKET R LAMP AS		1	
6		ASSY F DOOR		1	
6-1		DOOR F URT AS	PRE+URT	1	

NO	PART CODE	PART NAME	DESCRIPTION	QUANTITY	REMARK
6-1-1	3015200900	STOPPER *M HI	POM	1	
6-1-2	7112401611	SCREW TAPPING	T1 TRS 4 $\downarrow$ 16 MFZN	2	
6-1-3	4010Y36211	BUSHING R HNDL	PP	1	
6-2	3012306100	GASKET F DR AS	PVC+MAGENT	1	
6-3	3019007800	POCKET F*T	GPPS	3	
6-4	3019007900	POCKET F*U	GPPS	2	
7		ASSY R DOOR		1	
7-1		DOOR R URT AS	PRE+URT	1	
7-1-1	4010Y36211	BUSHING R HNDL	PP	1	
7-1-2	4010G38023	BUSHING R DOOR	PA-66	1	
7-1-3	4010G38034	STOPPER R DOOR	SGCC T3.0	1	
7-1-4	7122401611	SCREW TAPPING	T2TRS 4 $\downarrow$ 16	1	
7-2	3012306000	GASKET R DR AS	PVC+MAGNET	1	
7-3	3011112200	CASE EGG	GPPS	1	
7-4	3019007700	POCKET BOTTLE	GPPS	1	
8	4001E32531	FOOT ADJ AS	PP+M6 BOLT	1	
9	3012906300	HINGE *M AS	P/D T3.2	1	
10	3016004000	SPECIAL BOLT	M6 $\downarrow$ L10	2	
11	3011721300	DOOR SWITCH AS		1	
12	3012906500	HINGE *T AS	SPC-1 T2.3	1	
13	3016000301	SPECIAL SCREW	M5 $\downarrow$ L14	1	
14	3011430100	COVER *T HI	PP	1	
15	7650602011	BOLT HEX	M6 $\downarrow$ L20	1	
16	4017Z99112	CASE ICE	GPPS	1	
17	4017Z98110	CASE ICING	PE	1	
18	3017811000	SHELF F	GPPS	1	
19	3011112000	CASE CHILLED	GPPS	1	
20	3017811100	SHELF R	GPPS	2	
21	3011430000	COVER CASE VEGETB	GLASS	1	
22	3011119000	CASE VEGETB	GPPS	1	
23	301360050	LAMP AS	120V/15W	1	
24	4017Z87570	SHADE R	HC-2	1	
25	3011116100	CASE VAPORI AS	AL A1100	1	
26	7112401211	SCREW TAPPING	T1TRS 4 $\downarrow$ 12	5	
27	3012400310	GRILLE	PP	1	
28	3011301711	CORD POWER AS	KP-30	1	
29	3016401600	RUNNING CAPACITOR	250 VAC/12 $\mu$ F	1	
30	3018100320	SWITCH TIMER	TMDEY 11UB9	1	
31	3015200000	STOPPER SHELF	PP(JI360)	4	
32	3010516900	BOX POWER	PP	1	